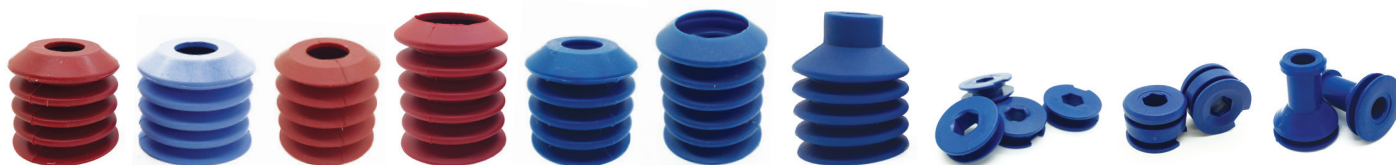


BST Vacuum Depanner Belt Solutions



BST have supplied vacuum depanner belts since 1985 and have accumulated a wealth of experience and a vast collection of own brand suction cups and retainer clips which are widely used throughout the baking industry. Vacuum depanner belts are a fast and effective method of extracting bakery products from oven pans on a moving conveyor belt. Our vacuum depanner belts are manufactured using food grade three ply fabric backed, with a white FDA food grade PVC coated front (bread facing side). The belt is 5mm thick and joined with a superior finger over finger spliced bi-directional joint. The belts can operate in temperatures up to 110°C, are long lasting, chemical resistant, strong and durable.

Belts are usually supplied pre-loaded with the appropriate cups and retainers to suit the customers specification. BST metal detectable silicone suction cups are designed to reduce the risk of silicone fragments contaminating food products during the depanning process, they contain an evenly dispersed metal detectable additive, making the cup and its fragments detectable by correctly calibrated in line metal detection systems. Our food grade dual detectable retaining clips are designed to securely fit our range of cups and bakery depanner belts.



BS Teasdale & Son Ltd

Unit 7, Delta Court, Sky Business Park, Robin Hood Airport, Doncaster, South Yorkshire, DN9 3GN, UK

Tel: +44 (0)1302 775208 | **Email:** sales@bst-detectable.com | **Web:** www.bst-detectable.com

FAQ's

BST stock a wide range of food contact approved metal detectable suction cups used for depanner belts and pick/place applications. A variety of hardness's, colours and rims ensure reliable performance and compliance. We also supply a wide range of dual detectable retaining clips to achieve varying reach and airflow. Two of the most commonly asked questions we get are:

Which detectable suction cups do I need on my belt?

The answer to this question is entirely dependant on the product that you're depanning. Sometimes the same belt can be used on different products but not always. If you're depanning a heavy, traditional white loaf with a flat surface, then our hard suction cups with a ringed rim (dark blue colour) will offer the best lifespan and durability. This is due to the harder silicone rubber and the rings on the rim providing re-enforcement and preventing stretch / tear.

If the loaf is still heavy, but has a more varied or textured surface, then you will probably need a hard cup with a plain rim. The extra flexibility on the plain rim allows for a good seal / grip on the uneven loaf surface.

If the loaf is seeded or particularly un-even then you will need to use a soft suction cup with plain rim (Usually terracotta red / pale blue in colour). The soft material allows for maximum flexibility, grip and seal on the loaf. However the softer cups do wear out faster - particularly with heavy loaves - this is why they are best suited for lighter breads such as burger buns or morning goods.

When selecting a depanner suction cup you should always opt for the most durable option that still provides enough grip to get your bread out of the pans reliably. For well-established product lines a little research can usually produce a track record and tell us which cup works best. For new products a trial setup is a good idea - loading different parts of the belt with different cups and observing the effects. Once the correct cup is determined - the belt can be permanently loaded with the correct type.

Which detectable retainer clips do I need on my belt?

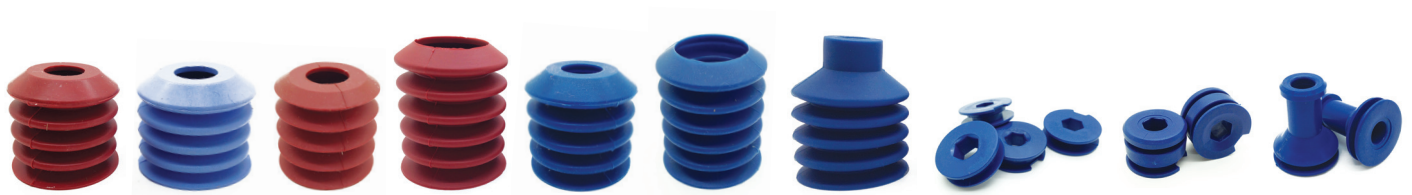
As with selecting a suction cup, a track record of what works best for the product is a good starting point. If this data is not available, then we have to look at your bakeries preferences and priorities.

Single round retaining clips are a historically popular choice - however these are declining in popularity as they are much more difficult to insert and replace than the newer single hex retainer clips. Round retainer clips are inserted by flat force - and 'pop' into position on the belt with the suction cup pre-attached onto the retainer.

Single hex retaining clips are easier to insert and replace as they feature a 'notch' which is located and the clip twisted into position using one of our specially made insertion tools. These are available in 8mm and 9mm hex options - for an insertion demo you can visit our youtube channel.

Our double hex retaining clips allow you to inspect / replace the suction cup without removing the retainer clip from the belt. They also provide extra reach from the belt to the product and are considered by some to be more hygienic for this reason. As a larger part they are more expensive to produce and buy - but are also more detectable for this reason.

We also offer long neck retaining clips which are designed specifically to fit our long neck suction cups. These are less common but do provide maximum reach from the belt and can be used on the edges of products that have a convex / domed surface.



BS Teasdale & Son Ltd

Unit 7, Delta Court, Sky Business Park, Robin Hood Airport, Doncaster, South Yorkshire, DN9 3GN, UK

Tel: +44 (0)1302 775208 | **Email:** sales@bst-detectable.com | **Web:** www.bst-detectable.com